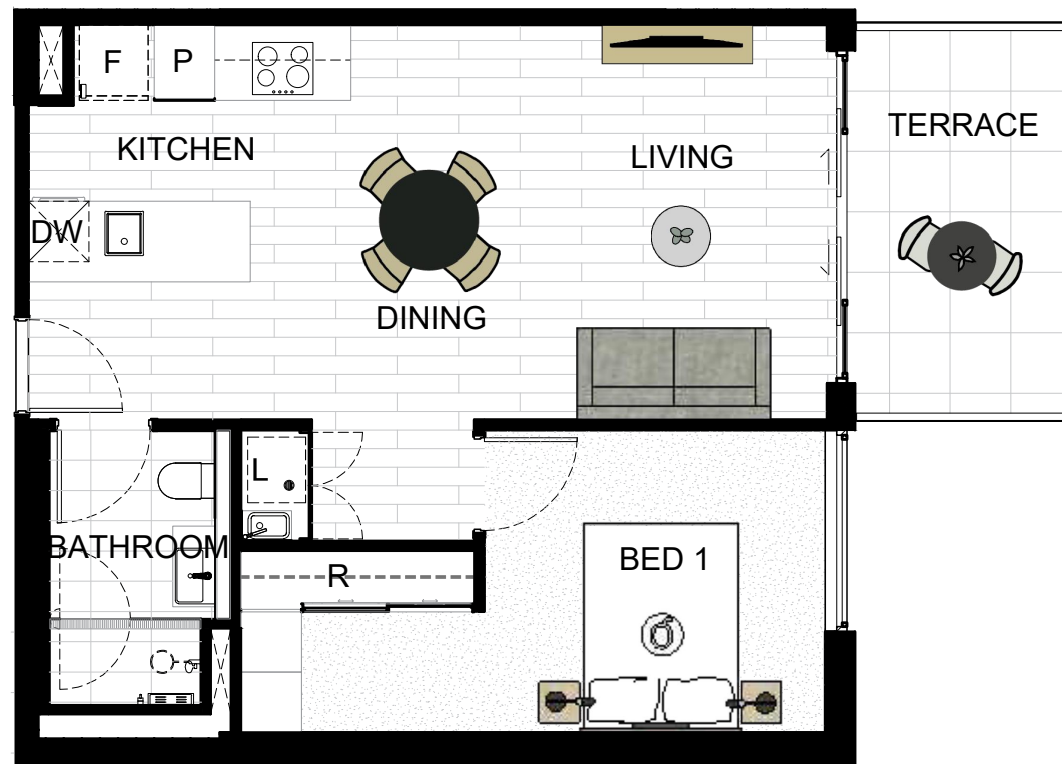
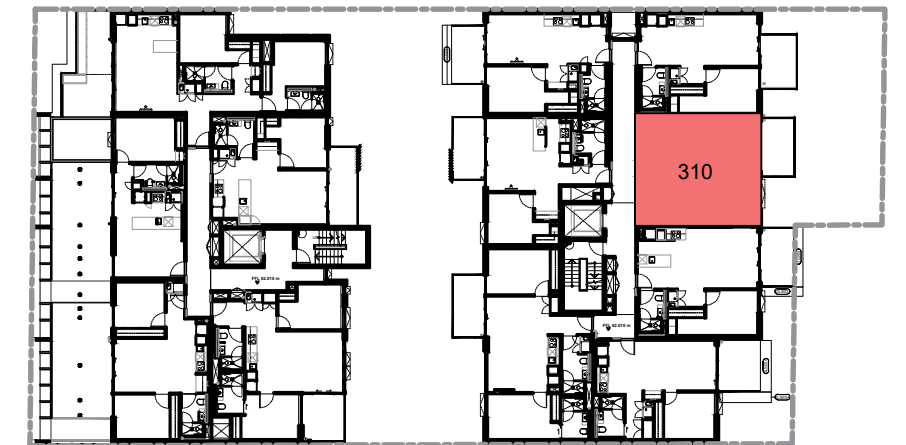


SOLARINO HOUSE

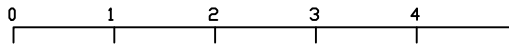

| Apartment No. | Floor Area | Terrace | Total |
|---------------|--------------------|-------------------|--------------------|
| Apart. 310 | 59.8m ² | 8.3m ² | 68.1m ² |
| Apart. 410 | 59.5m ² | 8.3m ² | 67.8m ² |
| Apart. 510 | 59.5m ² | 8.3m ² | 67.8m ² |



ALBION STREET



Key Plan 
LEVEL 3

| Apartment Type | Configuration |
|---|--|
| Type 1b - 9 | 1bed, 1bath |
| Legend | |
| 1 Bedroom | 1 Car park |
| 1 Bathroom | DW - Dishwasher |
| | F - Fridge Cavity |
| | L - Laundry |
| | P - Pantry |
| | R - Robe |
| Scale | |
|  | |
|  | <p><small>Disclaimer: While every care has been taken in the preparation of this plan, the particulars and information in it are not to be construed as containing any representation upon which an interested party is entitled to rely. All illustrations, drawing and photographs are for professional presentation purposes, are indicative only and not necessarily to scale. All information and material is subject to change without notice. All furniture is shown to indicate spacial arrangements only, and is not to be provided by the developer. Areas calculated according to Property Council of Australia 'method of measurement for residential property'.</small></p> |